

USER MANUAL

Condumax II

Hydrocarbon & Water Dew-Point Analyzer Transportable Sampling System



processensing.com | dwyeromega.com

For latest product manuals:

dwyeromega.com/en-us/pdf-manuals

processensing.com/en-us/resources/manuals

97438 v3.2

April 2026

Please fill out the form(s) below for each instrument that has been purchased.

Use this information when contacting Michell Instruments for service purposes.

Product Name	
Order Code	
Serial Number	
Invoice Date	
Installation Location	
Tag Number	

Product Name	
Order Code	
Serial Number	
Invoice Date	
Installation Location	
Tag Number	

Product Name	
Order Code	
Serial Number	
Invoice Date	
Installation Location	
Tag Number	



Condumax II Transportable Hydrocarbon & Water Dew-Point Analyzer Sampling System

For Michell Instruments' contact information please go to
www.ProcessSensing.com

© 2026 Michell Instruments

This document is the property of Michell Instruments Ltd and may not be copied or otherwise reproduced, communicated in any way to third parties, nor stored in any Data Processing System without the express written authorization of Michell Instruments Ltd.

Contents

Safety	v
Electrical Safety	v
Pressure Safety	v
Toxic Materials	v
Repair and Maintenance	v
Calibration	v
Safety Conformity	v
Abbreviations	vi
Warnings	vi
1 INTRODUCTION	1
1.1 Hazardous Area Installation.....	4
2 INSTALLATION.....	5
2.1 Orientation for Transportation/Storage and Operation	7
3 OPERATION.....	8
3.1 Sample Flow Start Up Procedure.....	9
3.2 Sample Flow Shut Down Procedure.....	11
3.3 Pressure Regulator Temperature Control	12
4 MAINTENANCE	13
4.1 Filter Element Replacement.....	13

Figures

<i>Figure 1</i>	<i>Flow Schematic</i>	<i>2</i>
<i>Figure 2</i>	<i>Components.....</i>	<i>3</i>
<i>Figure 3</i>	<i>Hose Connection</i>	<i>5</i>
<i>Figure 4</i>	<i>Horizontal Orientation for Transportation/Storage</i>	<i>7</i>
<i>Figure 5</i>	<i>Vertical Orientation for Operation.....</i>	<i>7</i>
<i>Figure 6</i>	<i>Removal of Interface/Display.....</i>	<i>9</i>
<i>Figure 7</i>	<i>Solenoid Valve Location</i>	<i>9</i>
<i>Figure 8</i>	<i>PR1 Adjustment Point</i>	<i>10</i>

Appendices

Appendix A	Technical Specifications.....	15
Appendix B	Hazardous Area Certification	17
	B.1 Product Standards	17
	B.2 Product Certification	17
	B.3 Global Certificates/Approvals	18
	B.4 Special Conditions of Use	18
	B.5 Maintenance and Installation	18
Appendix C	Quality, Recycling & Warranty Information.....	20
Appendix D	Analyzer Return Document & Decontamination Declaration	22

Safety

The manufacturer has designed this equipment to be safe when operated using the procedures detailed in this manual. The user must not use this equipment for any other purpose than that stated. Do not apply values greater than the maximum value stated.

This manual contains operating and safety instructions, which must be followed to ensure the safe operation and to maintain the equipment in a safe condition. The safety instructions are either warnings or cautions issued to protect the user and the equipment from injury or damage. Use qualified personnel and good engineering practice for all procedures in this manual.

Electrical Safety

The instrument is designed to be completely safe when used with options and accessories supplied by the manufacturer for use with the instrument.

Pressure Safety

DO NOT permit pressures greater than the safe working pressure to be applied to the instrument. Refer to Appendix A, Technical Specifications, for pressure information.

Toxic Materials

The use of hazardous materials in the construction of this instrument has been minimized. During normal operation it is not possible for the user to come into contact with any hazardous substance which might be employed in the construction of the instrument. Care should, however, be exercised during maintenance and the disposal of certain parts.

Repair and Maintenance

The instrument must be maintained either by the manufacturer or an accredited service agent. Refer to www.michell.com for details of Michell Instruments' worldwide offices contact information.

Calibration

The recommended calibration interval for the Condumax II Transportable is one year, unless it is to be used in a mission-critical application or in a dirty or contaminated environment in which case the calibration interval should be reduced accordingly. The instrument should be returned to the manufacturer, Michell Instruments, or one of their accredited service agents for re-calibration (go to www.michell.com for contact information).

Safety Conformity

This product meets the essential protection requirements of the relevant EU directives.

Abbreviations

The following abbreviations are used in this manual:

AC	alternating current
atm	pressure unit (atmosphere)
barg	pressure unit (=100 kP or 0.987 atm) (gauge)
°C	degrees Celsius
°F	degrees Fahrenheit
EU	European Union
HCdp	hydrocarbon dew point
Hz	Hertz
lb	pounds
kg	kilograms
mm	millimeter
Nm ³ /h	normal cubic meters per hour
psig	pound(s) per square inch (gauge)
scfh	standard cubic feet per hour
V	Volts
"	inches
%	percentage

Warnings

The following general warnings listed below are applicable to this instrument. They are repeated in the text in the appropriate locations.



Where this hazard warning symbol appears in the following sections, it is used to indicate areas where potentially hazardous operations need to be carried out.



Where this symbol appears in the following sections it is used to indicate areas of potential risk of electric shock.

1 INTRODUCTION

The Condumax II Transportable Hydrocarbon Dew-Point Analyzer Sampling System should be used in conjunction with the Condumax II Hydrocarbon Dew-Point Analyzer User Manual.

The sampling system is in a custom designed, heavy duty, 316 stainless steel carry case. The case is fitted with six feet on the base (for transportation), and on the base edge (for upright analyzer system operation). It has six folding carry handles for ease of mobility by two persons and can be transported between sites using a vehicle.

It features a Condumax II hydrocarbon dew-point analyzer, installed into the sampling system for automatic measurements that can be taken under supervision by an operator. The analyzer should not be left alone for extended periods unattended. It is designed for operator monitored use only.



Warning!

This instrument can weigh up to 60 kg (132 lb).

Manual lifting and handling should be done by two people observing appropriate precautions.

NOTE: During transportation, and when not in actual operation, the unit must be stored on its back (the six main feet opposite the lid face) and with the lid in place to prevent damage and contamination.

NOTE: When not in use, the sample hoses should be disconnected from their connections, and the dust protection caps should be replaced.

To assure correct measurement performance of this system in outdoor field use, the ambient air temperature must be at least 5 °C above both the hydrocarbon dew-point temperature of the process gas sample at the cricondentherm condition, typically 27 barg (392 psig), and water dew point at full process line pressure.

The Condumax II Transportable Hydrocarbon Dew-Point Analyzer Sampling System is specifically designed for the measurement of hydrocarbon & water dew points in natural gas. It is a rudimentary sampling system suitable for spot check measurements under the supervision of an operator. The system is configured with the necessary pressure let-down and flow control required for measurement at pressure before finally venting to an atmospheric or a low pressure flare vent line system.

A fast loop bypass flow arrangement is included to reduce sample flow response / time lag and to enable the filter to be drained automatically of any potential hydrocarbon liquids and hydrates that may be formed.

The system is configured for connection directly to transmission pipeline natural gas at, typically, 70 barg (1015 psig) pressure (100 barg/ 1450 psig maximum). Sample gas pressure reduction is incorporated via an electrically heated regulator for analysis at intermediate pressure. It has an adjustment range up to 35 barg (500 psig) fitted with line pressure gauge, 100 barg/ 1450 psig scale (analysis pressure indicated by the Condumax II Main Unit).

Hydrocarbon dew-point analysis pressure is adjusted by a heated pressure regulator in the range up to 35 barg (500 psig), but it is typical for measurements to be made at the cricondenthem condition of 27 barg (400 psig), where the highest HC dew-point temperature will be detected on the retrograde phase envelope.

The water dew point is measured at full pipeline pressure, to determine the highest water dew point for the gas sample being analyzed.

A set of 3 (2 m each) hoses is provided to allow connection to the sample, exhaust and filter drain/bypass, via a 1/4 in NPT(M) fitting. Standard fitting assembly practices should be used. **NOTE: Sealing tape must be used to seal fitting to the sample tapping point.** The use of thread sealants is NOT recommended when making measurements with this type of dew-point analyzer, as contamination of the measurement instruments is likely to occur from sealant ingestion into the sampling system.



The sampling system is designed for temporary installation and should not be left unattended.

Operator attendance is required at all times. Prolonged periods of operator absence are not advised.



During operation the sampling system must be located in an environment with a temperature of at least +10 °C (+18 °F) above the highest envisaged dew-point temperature, both hydrocarbon at cricondenthem and water at line pressure.

It is not advised to operate the analyzer in excessive wind, rain and snow.

All sample gas wetted metallic parts are constructed from AISI 316L stainless steel with Viton soft parts that comply with the NACE standard ANSI/NACE-MR0175/ISO-15156 (latest edition). Tube fittings are twin ferrule compression type.

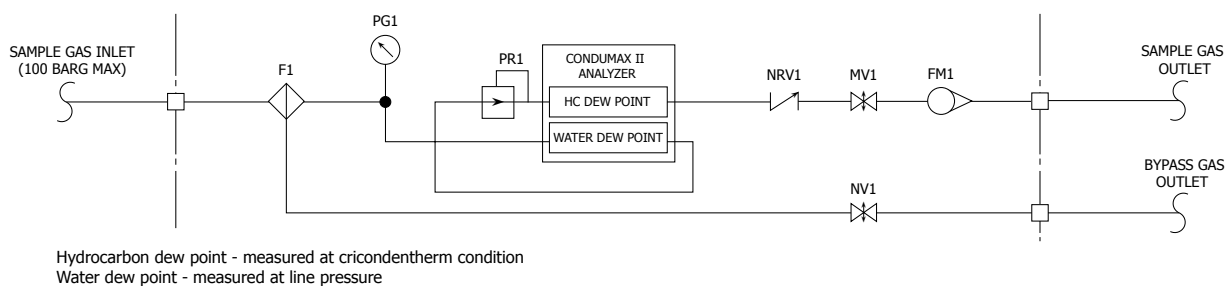


Figure 1 Flow Schematic

The gas handling components are as follows:

- | | |
|--------------------------|---|
| Coalescing Filter (F1) | Provides protection of the moisture sensor within the Condumax II instrument. |
| Pressure Gauge (PG1) | Provides indication of sample gas inlet pressure. |
| Pressure Regulator (PR1) | Allows the user to manually set the sample gas analysis pressure for hydrocarbon dew-point measurement. |
| Non-return valve (NRV1) | Provides system protection from back pressure of vent gas when sample gas is not flowing. |
| Metering Valve (MV1) | Allows the user to manually set the sample gas flow rate across the dew-point sensors. |
| Flowmeter (FM1) | Provides indication of the sample gas flow rate across the dew-point sensors. |
| Needle Valve (NV1) | Allows the user to manually control the bypass flow rate across the coalescing filter. |

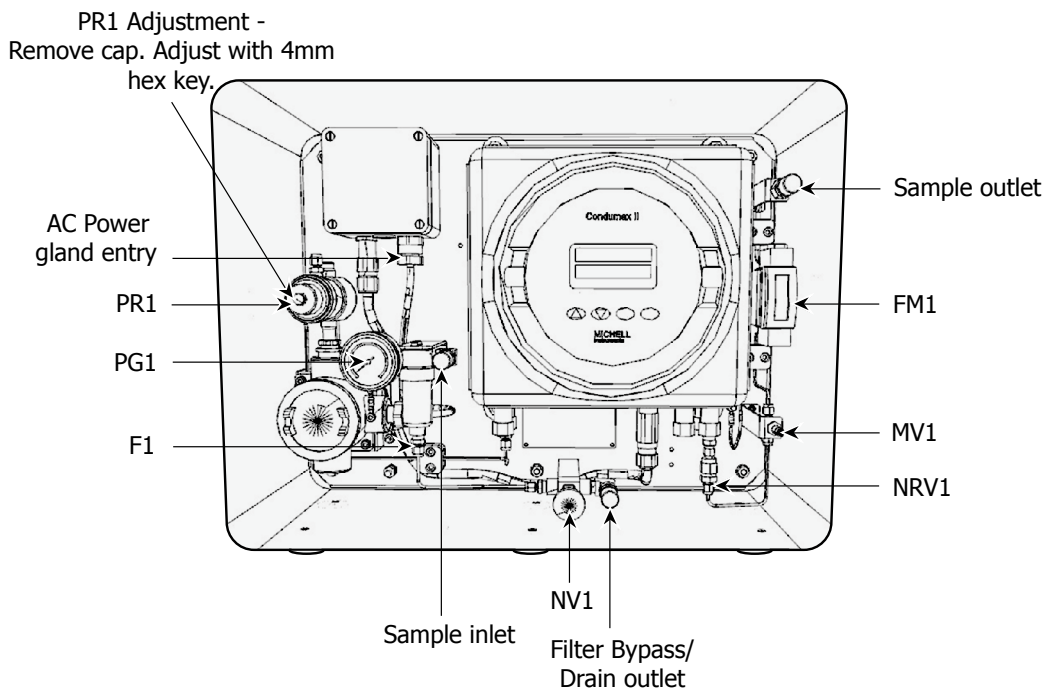


Figure 2 *Components*

There is an option to add an 'OUTPUTS' junction box within the enclosure, allowing the signals from the Condumax to be used externally

1.1 Hazardous Area Installation

This system incorporates equipment certified for use in hazardous areas (analyzers, heaters etc.) with specific protection levels (EPLs), temperature classes, gas groups, and ambient ratings.

The system delivered as an assembly is not certified as equipment in itself under the ATEX Directive 2014/34/EU, or equivalent. The electrical items within the system have been assembled according to the latest edition of IEC 60079-14, or the NEC/CEC for North America. All electrical and mechanical installation must be carried out in accordance with these standards and/or any applicable national or local legislation.

When installed as specified, the system is suitable for use in:

Zone Installation

- IEC Zone: 1 (Gas) NEC/CEC Zone: 2 (Gas)
- Gas Group: IIB+H2
- Temperature Class: T3
- Ambient Temperature Range: -30 °C to +55 °C (-22 °F to 131 °F)

Class, Division Installation

- Division: 2 (Gas)
- Gas Group: BCD
- Temperature Class: T3
- Ambient Temperature Range: -25 °C to +55 °C (-13 °F to 131 °F)

The user must ensure that the system is protected from conditions exceeding these limits, and that cable entries, gland seals, and earth bonding are correctly implemented per the certified component manuals and relevant standards.

Any modification to the system (such as the addition of certified equipment) may alter the area classification. Any changes must be documented.

2 INSTALLATION

The Sampling System should be transported in the horizontal position.

Before operation follow the procedure below:

1. Remove the lid of the case by undoing the 4 latch clips.
2. Bring the sampling system into the vertical position, as indicated on the label on the side of the case.
3. Make sample gas inlet, outlet and bypass connections using hoses provided (Minimess 1620 self sealing fittings with ¼ in NPT connections). Maximum inlet pressure 100 barg (1450 psig).

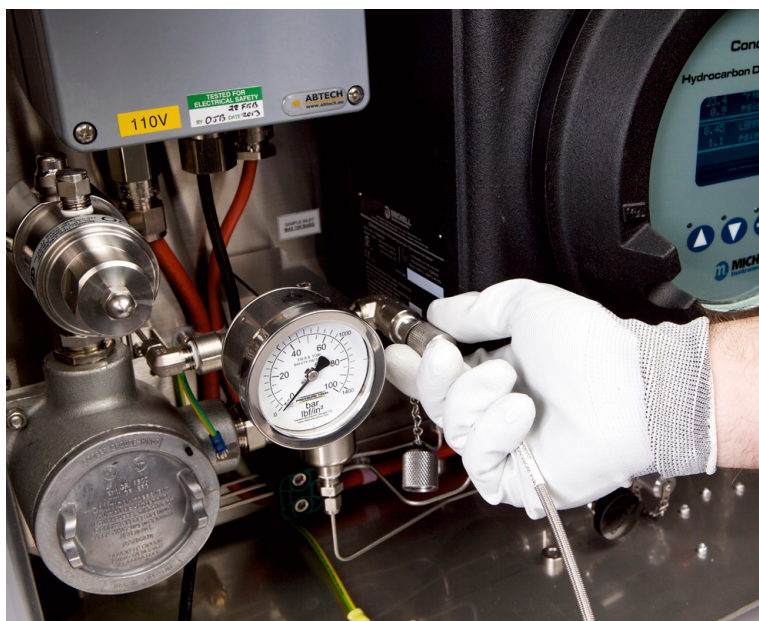


Figure 3 *Hose Connection*

4. A single phase 240 V AC or 110 V AC (check label on the **POWER CIRCUITS** junction box) mains power supply is required to operate the sampling system and analyzer. Make electrical connections to the **POWER CIRCUITS** junction box using suitable M20 cable glands.

Terminals are marked:

L - live, N - neutral, \perp - earth. Minimum cable requirements 3c x 0.75 mm².

NOTE: The user cannot change the specified power supply voltage.

5. Outputs junction box ATEX/IECEX/UKCA only (if installed)

Two analog 4 mA to 20 mA outputs and a Modbus RS485 digital interface are available. Cable connections are made onto terminals within the 'OUTPUTS' junction box located inside the sampling system enclosure.

Make electrical connections to the 'OUTPUTS' junction box using suitable M20 cable glands.

Terminals are marked as follows:

Terminal No. Output (As table: <column 1> number <column 2> text)

1 Modbus RS485 digital comms (Gnd)

2 Modbus RS485 digital comms (A)

3 Modbus RS485 digital comms (B)

4 Cable screen

5 Water Dew Point measurement current (-mA2)

6 Water Dew Point measurement current (+mA2)

7 Cable screen

8 Hydrocarbon Dew Point measurement current (-mA1)

9 Hydrocarbon Dew Point measurement current (+mA1)

10 Not used

<earth symbol> Cable screen

NOTE:

The 'OUTPUTS' junction box can easily be removed for access to the heated regulator terminal box if required.

2.1 Orientation for Transportation/Storage and Operation



The Condumax II Transportable must NOT be transported in the upright/vertical orientation as the shock absorbent design is only effective in the horizontal position.



Figure 4 *Horizontal Orientation for Transportation/Storage*

NOTE: Lid must be in place and clasps tightly shut



Figure 5 *Vertical Orientation for Operation*

3 OPERATION

Operation of the Sampling System should be carried out in conjunction with, and referring to, the Condumax II Dew-Point Hygrometer User Manual.

Before commencing the start-up procedure ensure that the installation conforms to the correct hazardous area and local plant standards.

Before any gas pressure is applied, check that all valves and regulators are in the fully closed position.



WARNING

A mandatory purge procedure is stipulated as part of the certification of the Condumax II product.

This procedure must be completed before any power or signal connections are made to the Condumax II.

This procedure must also be carried out at any time following service or maintenance periods that cause any of the Condumax II or associated gas handling equipment sample lines to be disconnected.

It is not necessary to carry out this procedure if, during a shut down period, the sample lines have not been disconnected or if the power (electrical) connections only have been disconnected.

Before commencement of the start-up procedure ensure that the power connections to the Condumax II are fully isolated and, if necessary, observe the stipulated de-energization period of 45 minutes.

3.1 Sample Flow Start Up Procedure

1. Unscrew and remove the Condumax II flameproof enclosure cover after first loosening the hex grub screw.
2. The user interface/display assembly uses two ¼-turn bayonet style fasteners, (finger operated), to secure it - turn clockwise to lock, counter-clockwise to release. The display must be supported once it is removed from the fasteners. The right hand fastener can be positioned to the left hand mount, as shown below.



Figure 6 *Removal of Interface/Display*

3. Locate the solenoid valve and the manual override operating adjuster (brass screw handle) mounted on the base of the solenoid valve body.

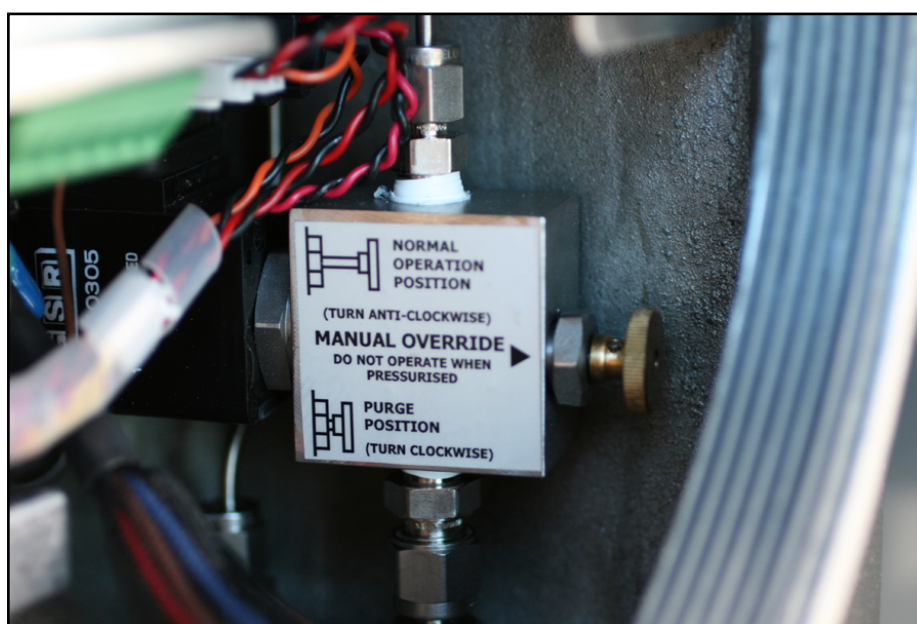


Figure 7 *Solenoid Valve Location*

4. Adjust the solenoid valve to the **PURGE POSITION** (fully screwed in clockwise) as shown on the label attached to the solenoid valve.
5. Allow the sample gas to enter the system.
6. Open the Bypass Needle Valve (**NV1**) one full turn.
7. Adjust the HCdp Flow Metering Valve (**MV1**) to indicate a sample gas flow rate of approximately 0.12m³/h (full-scale) on the HCdp Flowmeter (**FM1**).
8. Allow the sample gas to purge the system for a minimum of 3 minutes.
9. Re-adjust the solenoid valve to the **NORMAL OPERATING POSITION** (fully unscrewed counter-clockwise) as shown on the label attached to the solenoid valve.
10. Re-fit the Condumax II user interface/display assembly and flameproof enclosure cover. **NOTE: Make sure the hex grub screw is tightened to prevent inadvertent removal.**
11. After the flameproof enclosure cover has been refitted, the Condumax II is ready for power up. Apply the power supply to the system.
12. The HCdp Pressure Regulator (**PR1**) is used to set the HCdp gas analysis pressure. Pressure is indicated on the main display of the Condumax II. It is normal practice for an analysis pressure of 27 barg (391 psig) to be set for hydrocarbon dew point, as it is the recognized cricondentherm condition (pressure at which the highest hydrocarbon dew-point temperature will exist). To adjust the **PR1** - remove the cap to uncover the adjustment screw. Make the adjustment with a 4 mm hex key.

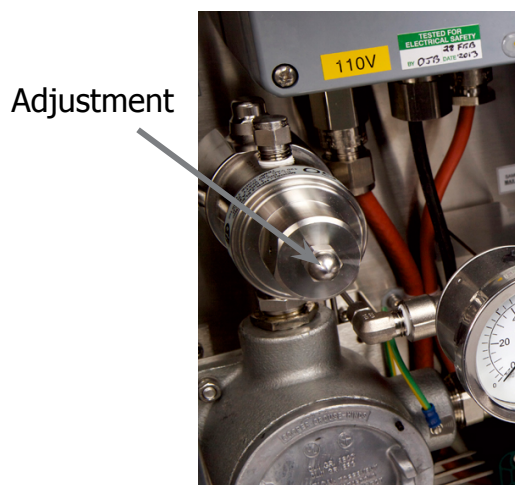
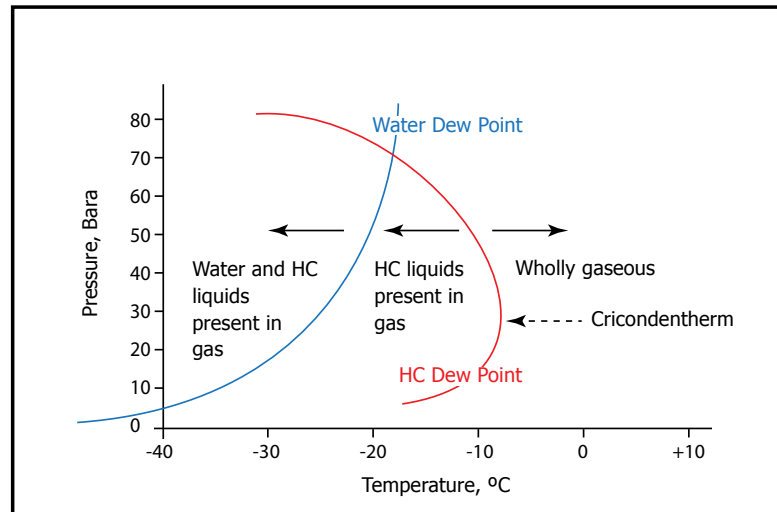


Figure 8 *PR1 Adjustment Point*

Water dew point is measured at the prevailing full line pressure, the condition at which the highest water dew point will exist.



13. Re-adjust the hydrocarbon & water dew-point sample gas flow rate to approximately 0.06 Nm³/h (2.1 scfh) using the Sample Flow Metering Valve (MV1) and allow the readings to stabilize - the readings from the first 2 or 3 HC dew-point measurement cycles should be disregarded.

3.2 Sample Flow Shut Down Procedure



WARNING

If accessing inside the Condumax II Exd housing for maintenance, a mandatory waiting period is stipulated as part of the certification of the Condumax II product.

After power down, a minimum period of 45 minutes must be observed before removing the cover of the Condumax II Exd housing.

1. Isolate the Sampling System from the sample gas supply line.
2. Allow a short time for the Sampling System to vent/depressurize before attempting to carry out any work on the system.
3. Isolate the Sampling System from the power supply.
4. If moving, transporting or storing the Condumax II, remove the sample hoses and refit the caps to the quick connect couplings. Note the orientation requirements in Section 2.1.

3.3 Pressure Regulator Temperature Control



This operation will expose electrical parts operating at high voltage. Therefore, power must be isolated from the supply for the Sampling System before making adjustments.

The heated pressure regulator contains an adjustment for the temperature control set-point (factory-set to approximately +24 °C (+75 °F)). It may need adjustment to increase/decrease the heat requirements to the regulator dependent on the high/low inlet gas pressure.

To make an adjustment proceed as follows:

1. Unscrew and remove the cover of the junction box after first loosening the hex grub screw.
2. Adjust the heater output by turning the potentiometer - clockwise to increase and anti-clockwise to decrease.
3. The seven markings around the potentiometer equate to an approximate temperature value for the heater of:

1 = +24 °C (+75 °F)	Recommended setting
2 = +27 °C (+80 °F)	May be advised by Michell dependent upon application
3 = +29 °C (+85 °F)	May be advised by Michell dependent upon application
4 = +35 °C (+95 °F)	May be advised by Michell dependent upon application
5 = +43 °C (+110 °F)	May be advised by Michell dependent upon application
6 = +54 °C (+130 °F)	Should not be set
7 = +79 °C (+175 °F)	Should not be set

4. Replace the junction box cover and tighten the hex grub screw.

4 MAINTENANCE



WARNING

This system operates under high pressure. Isolate power and sample gas and depressurize the Sampling System before attempting any maintenance or servicing.

Maintenance of the Condumax II Transportable Hydrocarbon Dew-Point Analyzer Sampling System should be carried out with reference to the Condumax II Hydrocarbon Dew-point Analyzer User Manual.

Routine maintenance of the system is confined to filter element replacements.

Calibration requirements and methods of implementation are described in the Condumax II Hydrocarbon Dew-Point Analyzer User Manual.

4.1 Filter Element Replacement

Life expectancy of the filter element is dependent upon operating conditions in each specific application. As a minimum, it is recommended that the filter element be cleaned or changed every 12 months. If inspection of the removed element shows that it is in good/poor condition after 12 months operation then the period between cleaning/replacement may be reduced/increased accordingly.

To replace the filter element, proceed as follows:

1. Isolate the sampling system from sample gas supply.
2. Allow a short time for the Sampling System to vent/depressurize before attempting to carry out any work on the system.
3. Disconnect the tube from the drain port of the filter bowl by releasing the tube fitting nut. DO NOT undo/loosen the tube fitting body, i.e. threaded joint!
4. Unscrew and remove the filter bowl and then the filter element. **NOTE: the filter bowl is sealed with a Viton O-ring.**
5. Discard the old used filter element and replace with a new filter element (Michell item no. SSF-CF-LON-10PK).
6. Replace the filter bowl, ensuring the O-ring is correctly seated and reconnect the tube to the drain port. **Tighten securely.**
7. Resume operation in accordance with the Start-Up Procedure (Section 2.2).

Appendix A

Technical Specifications

Appendix A Technical Specifications

General Specifications	
Case	316 stainless steel
Case Dimensions	640 mm x 490 mm x 330 mm (25 in x 19.3 in x 13 in)
Gas Connections	Minimess quick connect, 316 stainless steel braided Length – 3 m each hose
Gas Flow Rate	0.06 Nm ³ /h (2.1 scfh)
Gas Pressure	100 barg (1450 psig) max
Filter	Coalescing, Borosilicate, glass-bonded micro-fibers bonded with Kynar fluorocarbon (PVDF) resin (99.5 % removal of 0.1 micron particles and aerosols (BS4400))
Power Supply	110 V AC, 60 Hz (CSA) OR 240 V AC, 50 Hz (ATEX/UKCA)
Gas Wetted Bore	PTFE, 2 mm internal diameter
Process Connection	316 stainless steel, 1/4 NPT male
Power Consumption	< 300 W
Weight	60 kg (132 lb) max

Appendix B

Hazardous Area Certification

Appendix B Hazardous Area Certification

The Condumax II is certified compliant to the ATEX Directive (2014/34/EU), the IECEx scheme and SI 2016 No. 1107 UKCA product marking scheme for use within Zone 1 & 2 Hazardous Areas and has been assessed as being so by ELEMENT MATERIALS TECHNOLOGY Ltd (Notified Body 2812) and ELEMENT MATERIALS TECHNOLOGY Ltd (Approved Body 0891).

The Condumax II is certified compliant to the applicable North American Standards (USA and Canada) for use within Class I, Division 1 and Class I, ZONE 1 Hazardous Locations and has been assessed as being so by QPS Evaluation Services Inc.

B.1 Product Standards

This product conforms to the Standards:

BS/EN60079-0:2018	IEC60079-0:2017
BS/EN60079-1:2014	IEC60079-1:2014
C22.2 No. 30-20 CSA	ANSI/UL 60079-0 7th ed.
C22.2 No. 60079-0-19 CSA	ANSI/UL 60079-1-7th ed.
C22.2 No. 60079-1-16 CSA	UL/ANSI 61010-1, 3rd ed.
C22.2 No. 61010-1-12 CSA	UL1203 5th ed.

B.2 Product Certification

**Using Michell BR or
M.A.M. BREATHER**

ATEX/UKCA
II 2 G
Ex db IIB + H2 Gb
T6 (Tamb -40 °C to +44 °C
(-40 °F to +111.2 °F))
T5 (Tamb -40 °C to +59 °C
(-40 °F to +138.2 °F))

IECEX
Ex db IIB + H2 Gb
T6 (Tamb -40 °C to +44 °C
(-40 °F to +111.2 °F))
T5 (Tamb -40 °C to +59 °C
(-40 °F to +138.2 °F))

cQPSus
Class I, Division 1,
Groups B, C & D
T6 (Tamb -25 °C to +59 °C
(-13 °F to +138.2 °F))

CL I ZONE 1
Ex db IIB+H2 Gb
AEx db IIB+H2 Gb
T6 (Tamb -40 °C to +44 °C
(-40 °F to +111.2 °F))
T5 (Tamb -40 °C to +59 °C
(-40 °F to +138.2 °F))

**Using Killark KQBA
1/2" NPT BREATHER**

ATEX/UKCA
II 2 G
Ex db IIB + H2 T3 Gb
Tamb -40 °C to +60 °C
-40 °F to +140 °F

IECEX
Ex db IIB + H2 T3 Gb
Tamb -40 °C to +60 °C
-40 °F to +140 °F

cQPSus
Class I, Division 1,
Groups B, C & D
T3 Tamb -25 °C to +60 °C
-13 °F to +140 °F

CL I ZONE 1
Ex db IIB+H2 T3 Gb
AEx db IIB+H2 T3 Gb
Tamb -40 °C to +60 °C
-40 °F to +140 °F

**Using Killark KQBA
M20 BREATHER**

ATEX/UKCA
II 2 G
Ex db IIB T4 Gb
Tamb -40 °C to +60 °C
-40 °F to +140 °F

IECEX
Ex db IIB T4 Gb
Tamb -40 °C to +60 °C
-40 °F to +140 °F

cQPSus
Class I, Division 1,
Groups B, C & D
T4 Tamb -25 °C to +60 °C
-13 °F to +140 °F

CL I ZONE 1
Ex db IIB T4 Gb
AEx db IIB T4 Gb
Tamb -40 °C to +60 °C
-40 °F to +140 °F

B.3 Global Certificates/Approvals

ATEX	TRAC11ATEX21319X
IECEX	IECEX TRC 11.0008X
UKCA	EMA21UKEX0002X
cQPSus	LR1507-7

These certificates can be viewed or downloaded from our website, at:
<http://www.michell.com>



Special attention should be paid to the *Special Conditions for Safe Use* and the *Conditions of Certification* listed in the certificates shown on the website.

B.4 Special Conditions of Use

1. Do not open when an explosive gas atmosphere may be present.
2. External cables shall be compatible with a temperature of 80 °C (176 °F) (T6), 95 °C (203 °F) (T5) and 96 °C (204.8 °F) (T4/T3).
3. Maximum process pressure shall not exceed 138 bar when the Killark breather is fitted or 60 bar when the Michell/M.A.M breather is fitted.
4. Maximum combined process flow into the enclosure shall not exceed 1.5 LPM.
5. All process lines shall be purged to ensure the process gas or liquid is above its upper explosive limit before applying power.
6. Where painted or powder coated, the enclosures could present an electrostatic hazard. Clean only with a damp or anti-static cloth.
7. The enclosure is to be earthed externally using the earth point provided.
8. Only suitably ATEX/IECEX/UKCA/NRTL certified (as appropriate) cable glands and blanking elements shall be used.

Refer to the relevant sections within this manual for the connection, wiring and cable glanding requirements.

B.5 Maintenance and Installation

The Condumax II must only be installed by suitably qualified personnel and in accordance with the instructions provided and the terms of the applicable product certificates.

Maintenance and servicing of the product must only be carried out by suitably trained personnel or returned to an approved Michell Instruments Service Center.

Flame paths are not intended to be repaired.

Appendix C

Quality, Recycling & Warranty Information

Appendix C Quality, Recycling & Warranty Information

Michell Instruments is dedicated to complying to all relevant legislation and directives. Full information can be found on our website at:

www.michell.com/compliance

This page contains information on the following directives:

- ATEX Directive
- Calibration Facilities
- Conflict Minerals
- FCC Statement
- Manufacturing Quality
- Pressure Equipment Directive
- REACH
- RoHS3
- WEEE2
- Recycling Policy
- Warranty and Returns

This information is also available in PDF format.

Appendix D

Analyzer Return Document & Decontamination Declaration

Appendix D Analyzer Return Document & Decontamination Declaration

Decontamination Certificate

IMPORTANT NOTE: Please complete this form prior to this instrument, or any components, leaving your site and being returned to us, or, where applicable, prior to any work being carried out by a Michell engineer at your site.

Instrument			Serial Number	
Warranty Repair?	YES	NO	Original PO #	
Company Name			Contact Name	
Address				
Telephone #			E-mail address	
Reason for Return /Description of Fault:				
Has this equipment been exposed (internally or externally) to any of the following? Please circle (YES/NO) as applicable and provide details below				
Biohazards			YES	NO
Biological agents			YES	NO
Hazardous chemicals			YES	NO
Radioactive substances			YES	NO
Other hazards			YES	NO
Please provide details of any hazardous materials used with this equipment as indicated above (use continuation sheet if necessary)				
Your method of cleaning/decontamination				
Has the equipment been cleaned and decontaminated?			YES	NOT NECESSARY
Michell Instruments will not accept instruments that have been exposed to toxins, radio-activity or bio-hazardous materials. For most applications involving solvents, acidic, basic, flammable or toxic gases a simple purge with dry gas (dew point <-30°C) over 24 hours should be sufficient to decontaminate the unit prior to return. Work will not be carried out on any unit that does not have a completed decontamination declaration.				
Decontamination Declaration				
I declare that the information above is true and complete to the best of my knowledge, and it is safe for Michell personnel to service or repair the returned instrument.				
Name (Print)			Position	
Signature			Date	

NOTES:



97438 Issue 3.2, April 2026



processsensing.com | dwyeromega.com